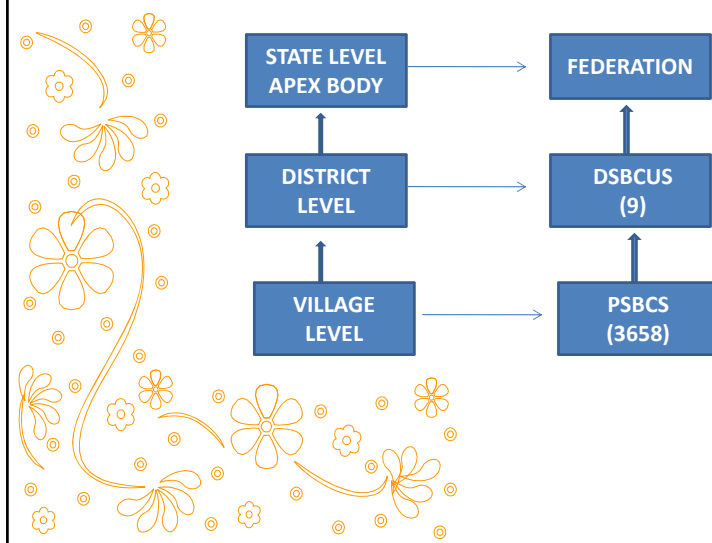


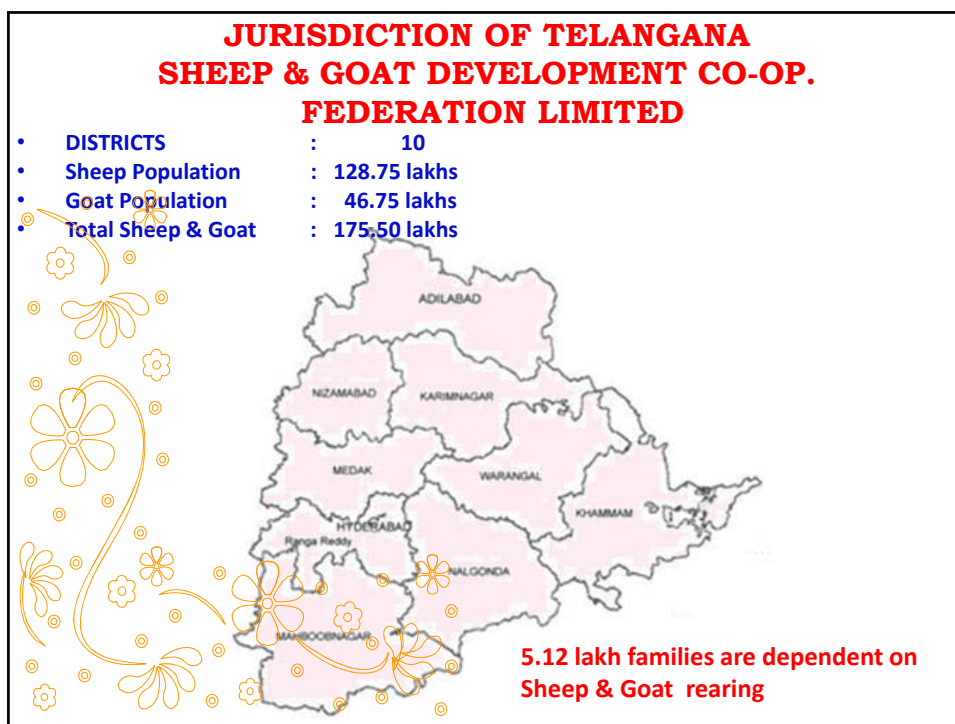
ACTIVITIES OF THE TSSGDCFL

Telangana State Sheep & Goat Development Cooperative Federation Ltd is '**Implementing Agency**' for all the schemes relating to sheep & goat development activities in the State. The following are the activities of TSSGDCFL:

- To implement all Central & State Government schemes related to Sheep & Goat Development.
- To extend Financial assistance for purchase of units by getting funds from different funding agencies like NCDC, NABARD, GOI, CWDB etc.
- To distribute elite Breeding Rams produced in the farms to the members to increase breed potentiality and to avoid inbreeding.
- To develop fodder in the lands belonging to members, community, Govt and leased to augment fodder deficit.
- To establish silage pits at individual, Society and union level and also in farms.
- To provide reasonable price to the animals by establishing sheep market yards at strategic locations.
- To create awareness among members about profitable sheep farming.
- To develop & strengthen the viable sheep cooperatives in the state.

TELANGANA STATE SHEEP & GOAT DEVELOPMENT COOPERATIVE FEDERATION LTD (3-TIER SYSTEM)





**SHEEP & GOAT POPULATION IN
TELANGANA STATE**

SL. NO	DISTRICT	SHEEP	GOAT	TOTAL
1	MAHABUBNAGAR	3730689	687066	4417755
2	RANGA REDDY	674239	462395	2438889
3	MEDAK	1072380	573931	2196197
4	NIZAMABAD	920548	477681	2051152
5	ADILABAD	695125	588340	1646311
6	KARIMNAGAR	1641547	409605	1398229
7	WARANGAL	1749429	446768	1283465
8	KHAMMAM	486073	495818	1136634
9	NALGONDA	1905189	533700	981891
	TOTAL	12875219	4675304	17550523

**STATEMENT SHOWING DISTRICT WISE
PARTICULARS OF SHEEP BREEDERS
COOPERATIVE UNIONS**

Sl. No	Districts	Number of existing PSBCS	No. of Members in the Societies				
			SC	ST	BC	OC	Total
1	Ranga Reddy	152	0	0	8182	0	8182
2	Nizamabad	224	82	0	7712	0	7794
3	Medak	511	14	16	23851	12	23893
4	Mahabubnagar	906	5	3	51377	3	51388
5	Nalgonda	455	165	293	13321	161	13940
6	Warangal	497	0	910	39124	986	41020
7	Khammam	141	1	1	6944	0	6946
8	Karimnagar	679	0	0	68140	0	68140
9	Adilabad	93	53	177	2750	174	3154
	TOTAL	3658	320	1400	221401	1336	224457

SCHEMES IMPLEMENTED BY THE FEDERATION

I. State Plan Scheme

- Sheep Insurance Scheme

II. Central Wool Development Board (GOI sponsored)

- Health Care
- Bhed Palak Bima Yojana
- Training

III. NCDC Assistance (GOI sponsored)

- Sheep Units
- Ram Lamb Units
- Training

IV. Programmes/Schemes implemented by Federation

- Sheep Expo
- Capacity Building & Training on improved Technologies

I. SHEEP INSURANCE PREMIUM & SUM ASSURED DURING 2015 - 16

Age group	Sum Assured	Total Premium (7%)	Premium contribution (7%)	
			Beneficiary (1/3 rd) + S.T (14%)	Government (2/3 rd)
Young Ones (4 to 12 Months)	Rs.1500/-	Rs.120.00 (Rs.105 + Rs.15 S.T)	Rs. 50.00 (Rs.35 + Rs.15 S.T)	Rs.70.00
Adults (1 to 7 years)	Rs.3000/-	Rs.240.00 (Rs.210+ Rs.30 S.T)	Rs.100.00 (Rs.70+Rs.30 S.T)	Rs.140.00

Budget Release – Rs.82.00 lakhs

No. of sheep insured 58571

II. CENTRAL WOOL DEVELOPMENT BOARD SCHEMES

CWDB has sanctioned an amount of Rs.46.00 lakhs as Grant-in-aid for implementation of the following schemes.

- 1) SWIS – Sheep & Wool Improvement Scheme
- 2) Social Security Scheme
 - Bhed Palak Bhima Yojana

1. SHEEP & WOOL IMPROVEMENT SCHEME (SWIS)

- Under the scheme 2.00 lakh sheep are covered with an amount of Rs.46.00 lakhs.
- The scheme is implemented in 4 districts i.e Medak, Nizamabad, Nalgonda & Warangal.
- Under this scheme health care of sheep is taken up.
- The medicine will be provided @ Rs.18/- per sheep for critical health care of sheep to improve body weight and wool quality.

2. BHED PALAK BHIMA YOJANA UNDER CWDB

This program is focused on the insurance of sheep rearers.

• Sheep Breeder, whether male or female, between the age group of 18-59 years are eligible.

• The total sum assured is Rs.330/- out of which Rs.80/- will be the beneficiary contribution.

Insurance coverage

For normal death Rs.60000/-, Accidental death and permanent disability Rs.150000 and partial disability Rs.75000.

In addition to this scholarship of Rs.100/- per month per child is to be paid to students studying in 9th to 12th standard for a period of coverage of insurance policy.

8803 shepherds in 9 districts of Telangana state were enrolled under Bhed Palak Bhima Yojana Scheme.

NATIONAL CO-OPERATIVE DEVELOPMENT CORPORATION(NCDC) SCHEME

- The NCDC, New Delhi has sanctioned a total outlay of Rs.64.73 crore, including beneficiary contribution to implement the small ruminant development programme in Mahabubnagar District by Sheep Federation. The Govt has borrowed an amount of Rs.51.78 crores (60% loan component+20% subsidy) from NCDC.
- Out of Rs.51.78 crores, an amount of Rs.18.40 crores (60% loan component+20% subsidy) has been released as 1st year outlay.
- Out of Rs.18.40 crores, an amount of Rs.15.20 crores (60% loan component + 20% subsidy) has been utilized for grounding of total 1596 Sheep Units covering 120 Primary Sheep Breeders Cooperative Societies (PSBCSs) in Mahabubnagar District.

PROGRESS OF GROUNDING IN MAHABOONAGAR DISTRICT (1ST & 2ND INSTALLMENT)

S.No	SCHEME	UNITS GROUNDED
1.	Sheep rearing units (20+1)	1478
2.	Sheep Breeding units (50+2)	68
3.	Sheep Breeding units (100+5)	14
4.	Sheep Breeding units (500+25)	5
5.	Ram Lamb Units	31
	Total	1596

NCDC SCHEME FOR (8) DISTRICTS

The Telangana State Sheep & Goat Development Cooperative Federation Ltd has submitted a project proposal for Development of Small Ruminants in 8 Districts of Telangana state i.e., Karimnagar, Warangal, Khammam, Nalgonda, Rangareddy, Medak, Nizamabad & Adilabad Districts with an outlay of Rs.398.88 crores.

- ◉ The Government have approved the 1st year scheme outlay and addressed a letter to the NCDC, New Delhi for release of loan along
- ◉ with the eligible subsidy. The funding patten along with the total NCDC assistance is shown below:

Total Project Cost		398.88
Loan	60%	234.77
Subsidy	20%	82.05
Total NCDC Assistance	80%	316.82
Beneficiary contribution	20%	82.05

The programme is phased out into (3) years.

NCDC SCHEME

The project will be phased out in three years and the total NCDC assistance of Rs.316.82 crore (60% loan component + 20% subsidy) will be borrowed as follows from NCDC, New Delhi:

Phasing of Loan	Year wise split up	NCDC Component(Rs. in crore)	Total outlay (Rs. in crore)
First Year	(20%)	63.36	79.78
Second Year	(40%)	126.73	159.55
Third Year	(40%)	126.73	159.55
Total NCDC Assistance	Total	316.82	398.88

•No. of Physical units proposed:

1.	Sheep rearing units (20+1)	12000
2.	Sheep Breeding units (50+2)	3000
3.	Sheep Breeding units (100+5)	1200
4.	Sheep Breeding units (500+25)	100
	Total	16,300
5.	Trainings	15184

NCDC –TRAINING CUM AWARENESS PROGRAMME HELD ON 14.08.2015



DECCANI NATIVE SHEEP BREED OF TELNGANA



BEAUTIFUL PRODUCTS FROM DECCANI SHEEP WOOL



HYDERABADI-SPECIAL DISHES WITH DECCANI RAM MEAT



NEW PROGRAMMES PROPOSED

- The following initiatives are proposed to strengthen the Societies/District Unions by introducing business models by the Society members as a common interest activity

1. Ram Lamb rearing
2. Internal lending of Loans
3. Self-help Insurance Policy



PROGRAMMES/SCHEMES FOR SHEEP & GOAT DEVELOPMENT BY AH DEPARTMENT, TELANGANA

1. MASS SHEEP & GOAT DEWORMING PROGRAMME

- Worm load in sheep & goat will lead to production losses and lower the immunity levels.
- Deworming is done on campaign mode on free of cost to reduce worm load.

Activity:

- **Three rounds of Deworming will be conducted during 2015-16 to cover 175.50 Lakh sheep & Goats on free of cost with Plan and RKVY funds.**

- **Fin. allocation: Rs. 1200.00 Lakh.**

Out come:

- Farmers will be benefitted by increased body weights of each Sheep & Goat in the flock by about 1.0 to 1.5 Kg and also reduced morbidity and mortality in the flock.
- Increased lambing rate. Immunity status will be increased.
- Reduced pasture land contamination by minimizing the worm load within the host.
- Knowledge about the occurrence of important parasitic infestations in the area.



2. MINI SHEEP & GOAT UNITS (5+1)

Objectives :

- To enhance the economic status of rural farmers, PoP women, destitute women or widows , SHG women.
- To inculcate the habit of intensive rearing or stall feeding among the sheep and goat rearers.
- To supplement the diet of rural families by including the animal protein and by way of increasing the availability of meat from sheep & goats

Silent features:

- The scheme will provide an opportunity to poor farmers /women to earn an additional income to improve their livelihoods as the progeny born (kids or lambs) can provide regular and sustain income.

Unit cost : Rs.30,000/- Subsidy: Rs.15,000/- (50%)

Physical & Financial out lay:

- Rs. 483.80 lakhs are provided for supply of 3225 Mini Sheep & Goat Units.

Expected out come:

- About 3225 rural families will be benefitted.
- Annual increase in meat production .
- Additional income of Rs.50,000/- per family per annum.
- Household nutrition is available



3. Intensive and semi-intensive sheep / Goat Farms (100+5) on Pilot basis

- Due to fast modernization and urbanization, the natural grazing lands and waste lands are shrinking day by day. As the sheep and Goat population mostly dependent on natural grazing land, the availability of green mass has become uncertain.
- Intensive and semi intensive sheep & Goat Farms by supply of sheep & Goat Units (100+5) among the rural entrepreneurs, i.e., group of 2-5 members .
- It is a credit linked project and 25% subsidy will be provided per unit of 100+5 Sheep/ goat Farms.

Item	Amount
Cost of Rams (5 No's x Rs. 7600/-) Ewes (100 No's x 5700/-)	Rs. 6,08,000/-
Insurance @ 4% on animal cost	Rs. 24,320/-
Construction of sheds for rams (5 rams x 14 SFT x Rs.290/-)	Rs. 20,300/-
Constructions of shed for Ewes (100 No's @ 12 Sft x Rs.290/-)	Rs. 3,48,000/-
Total	Rs. 10,00,000/-

Subsidy : Rs. 2.50 Lakh per Unit(25%)	Expected outcome: <ul style="list-style-type: none"> • 64 shepherds/ entrepreneurs will be benefitted. • Additional income to the beneficiaries. • Additional increase in meat production
Non subsidy : Rs. 7.50 Lakh (75 %)	
Bank loan	
Physical out lay : 64 Units	
Financial Out lay : Rs. 160.00 Lakh(subsidy)	

4: MODEL SHEEP & GOAT FARM FOR DEMONSTRATION & TRAINING AT MAMIDIPALLY , RR DISTRICT

Objectives:

- To impart trainings on latest advances in Sheep / Goat production and best utilization of the resources.
- To transfer improved technologies on sheep production to farmers, entrepreneurs.
- To supply Breeding Rams, Ewe Lambs/Ram Lambs / bucks/ does to the needy shepherds.
- To encourage farmers to sustain in drought conditions by providing improved varieties of feed and fodder.
- To address the shepherds in management/lamb mortality, hygienic problems.
- To conduct training/ demonstration Programmes for Shepherds on intensive and semi Intensive Management and to popularise the modern management practices.

Activity :

- The Department Land is available at Mamidipally , RR District and it is proposed to take up the said project with 1000 Ewes/ Does + 100 Rams/bucks and also a training Center .

Fin. Out lay:

- Non recurring expenditure : Rs. 227.66 Lakh
(Civil structure and equipment)
- Recurring expenditure : Rs. 12.12 Lakh
- Training Center : Rs. 35.22 Lakh

Total : Rs. 275.00 Lakh

Expected outcome:

- Intensive and semi Intensive Sheep/ Goat Farming will be popularized.
- 5000 Shepherds will be trained every year on modern farming management practices.
- Best practices are demonstrated and shared.



5: SHEEP MARKET YARDS

Objectives:

- The purpose of this project is to set up a small sheep and goat market in the potential and strategically located place in the district so as to provide better marketing facility for the sheep and goat rearers to fetch them reasonable price, offer wide choice for the buyers at reasonable price and offer minimum facilities for animals, sellers, buyers and other users of the market.
- The market also proposes to offer facilities for providing training and extension activities to the sheep and goat rearers of the area with the help of officials of Animal Husbandry Department.
- The market will also offer scope for the Animal Husbandry department to popularize their schemes and other facilities available to the sheep and goat rearers
- Two Sheep Market Yards were established in Nalgonda and Medak districts under RKVY 2008-09. It is planned to take up Market Yards in other districts also.
- The Models and design for sheep market Yards was provided by NABCON.
- Other linkages like feed support, health care and extension services are also provided.

RASHTRIYA KRISHI VIKAS YOJANA 2008-09

PROJECT : ESTABLISHMENT OF SHEEP MARKET YARDS

NODAL AGENCY : TSSGDCF LTD, HYDRABAD.



Sheep Market Yard- Nalgonda,



Sheep Market Yard- Siddipet, Medak